

A stylized landscape illustration featuring rolling green hills in various shades of green and yellow. Two dark green, conical trees stand on the right side. The sky is light blue with white clouds. The overall style is modern and graphic.

Every ALS Journey Is Different

Understanding Your Choices Is the First Step Forward

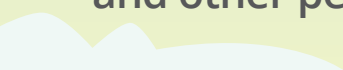
Helpful Information for Those
Newly Diagnosed With ALS

Support for the Road Ahead



Receiving a diagnosis of ALS can be overwhelming. There's a lot to learn, many questions to ask, and important decisions you'll need to make along the way.

However, it's important to remember **you're not alone**. In addition to your network of friends and family, you can find medical, practical, and emotional support from healthcare provider(s), advocacy groups, and other people living with ALS.



This brochure was designed to help you better understand your diagnosis. Learning more about managing ALS and working closely with your healthcare provider(s) will help you make the most informed decisions moving forward.

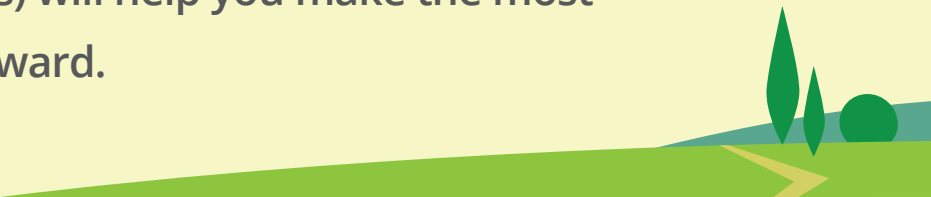


Table of Contents

The Basics of ALS.....	4
What Is ALS?	4
Symptoms of ALS	5
Monitoring Your Disease	6
Tracking Disease Activity	6
The ALSFRS-R Scale	6
Why Your Score Matters	7
Your Score Is Personal.....	7
Living With ALS	8
Communication Is Key	8
Explore Multidisciplinary Care.....	8
Learn About Helpful Interventions.....	9
Tips for Managing ALS.....	10
Treatment Options	11



For More Information

About ALS

Visit **ALS**pathways.com

The Basics of ALS

The more you learn about your disease, the better prepared you'll be for the path ahead.

What Is ALS?^{1,2}

Amyotrophic lateral sclerosis (ALS) is a nervous system disease that impacts physical function.

ALS begins in the brain and spinal cord by affecting nerve cells called **motor neurons**.

These motor neurons send commands from the brain to muscles throughout the body, allowing us to produce movements like walking, chewing, talking, and even breathing.

In people with ALS, these motor neurons stop working, cutting off this line of communication. Eventually, the brain loses its ability to control certain muscle movements, resulting in paralysis.

ALS is a progressive disease, meaning that symptoms get worse over time. People with ALS gradually lose their strength and muscle function, which can limit their ability to live independent lives.

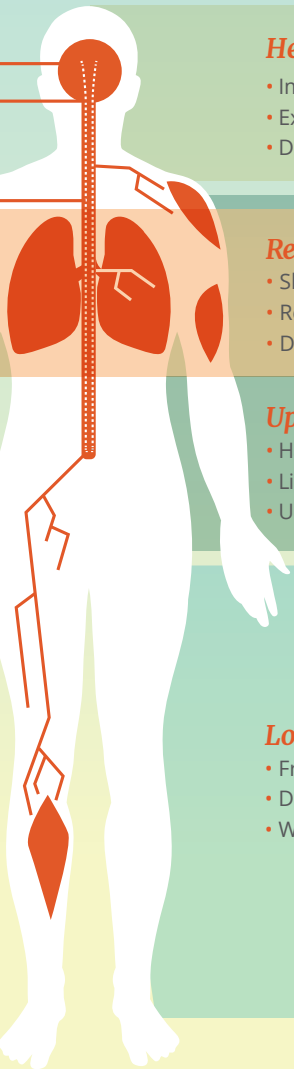
Brain —————
Brain stem —————

Spinal cord —————



Did you know?

In the US, ALS is also called Lou Gehrig's disease, named after the famous Yankees baseball player who was diagnosed with the disease in 1939.



Head and neck symptoms^{3,4} (Bulbar)

- Impaired speech
- Excess saliva
- Difficulty swallowing

Respiratory symptoms³

- Shortness of breath
- Restricted breathing
- Difficulty sleeping

Upper body symptoms³⁻⁵ (Cervical)

- Hand weakness
- Limited range of motion
- Upper body muscle spasms
- Trouble with dressing/hygiene
- Impaired handwriting
- Difficulty preparing food

Lower body symptoms^{4,5} (Lumbar)

- Frequent tripping
- Difficulty on stairs
- Weak feet

Symptoms of ALS⁵⁻⁷

Symptoms vary from person to person and can appear in different regions of the body.

ALS can progress differently for each person. Some people may first notice changes in their speech or swallowing, while others may feel weakness in their hands, arms, legs, or feet. Not everyone experiences the same symptoms or in the same order. However, over time, most people with ALS will face increasing muscle weakness and loss of movement.

People with ALS usually maintain control of bladder and bowel functions. Additionally, their sense of sight, touch, hearing, taste, and smell typically remain unaffected.

Speak with your healthcare provider(s) about all symptoms you may be experiencing.

Monitoring Your Disease

Tracking your disease progression may help you plan for what's to come.

Tracking Disease Activity⁸

Several clinical tools that help monitor ALS symptoms have been developed, including questionnaires based on your function, as well as tests that measure strength and breathing capacity. These tools are important to understand how ALS is affecting your body and how quickly it's progressing.

The ALSFRS-R Scale^{3,9,10}

One of these tools is called the ALS Functional Rating Scale-Revised (ALSFRS-R). The ALSFRS-R is a questionnaire that measures changes in a person's physical function over time, from climbing stairs and using utensils to breathing and swallowing.

The ALSFRS-R is the most widely used test in clinical trials to track ALS and is considered the gold standard.

The higher your score, the more function you have. The more slowly your score declines over time, the more slowly your disease is progressing.

Why Your Score Matters^{3,11}

Your ALSFRS-R score can help you know how well your body is functioning. Understanding your physical function is important for two reasons:

1. Quality of Life

There is a strong connection between how well your body is functioning and quality of life. Generally, the better you're able to move, the more independence you'll retain.

2. Survival

The rate at which ALS worsens can be used to estimate survival time. Preserving physical function is believed to help patients live longer.

Your Score Is Personal⁶

Remember, no two people with ALS are alike. Even if two people with ALS have the same overall score, ALS could still be affecting different regions of their bodies. For instance, take Steven and Mary.*



Steven

ALSFRS-R Score: 42

Symptoms: Difficulty writing and cutting food



Mary

ALSFRS-R Score: 42

Symptoms: Difficulty speaking and swallowing food

*Steven and Mary are hypothetical patients.

Living With ALS

Receiving the right support may help you make the best decisions every step of the way.

Communication Is Key

Because ALS affects every person differently, it's important to communicate regularly with your healthcare provider(s).

It's also important to maintain an open and honest dialogue with your caregivers, as well as to reach out to advocacy groups. They can help you manage your disease and provide emotional support.

Explore Multidisciplinary Care¹²

In addition to working with your doctor or neurologist, you can find many experts under one roof at many ALS clinics.

Many ALS clinics provide multidisciplinary care, meaning many types of doctors and experts work together on your behalf to create a personalized care plan.

Did you know?^{12,13}

Multidisciplinary care can help prolong survival time and help improve your mental and social well-being.

For More

Information

Visit **ALS**pathways.com

Learn About Helpful Interventions

As ALS gets worse, the muscles involved in vital body functions, such as eating and breathing, can weaken and make these tasks more challenging.¹⁴

Fortunately, certain interventions can assist with eating and breathing that may enhance quality of life and help prolong survival.^{15,16}

Discussing with your healthcare provider(s) the best time to start these interventions (and others like them) may help you stay ahead of your disease.



Proper Nutrition^{14,17}

People with ALS often face challenges with malnutrition. This can happen because of weight loss, problems eating, increased energy needs, and muscle loss. As many as 55% of people with ALS may experience malnutrition.

Your healthcare provider(s) will consider a range of options, from consuming high-calorie food and liquids to using a percutaneous endoscopic gastrostomy (PEG) tube that is inserted directly into the stomach.



Breathing Function¹⁸

As the muscles involved in respiration (breathing) weaken, it becomes harder to breathe. Respiratory failure is the leading cause of death in ALS, so it's important to intervene early.

Many patients begin receiving respiratory support through noninvasive ventilation (NIV). As ALS progresses, more invasive options may be required, such as a tracheostomy, which is a surgically created opening in the trachea.

Tips for Managing ALS

You're not defined by ALS. These tips may help you cope with and manage your disease.



Set personal goals: Decide which goals and aspirations are most important to you, and stick to them. Concentrate on the things and people you love.



Ask for help: If you ever have a question or need help with a task, don't hesitate to ask your healthcare provider(s) and/or caregiver.



Plan your next steps: Before leaving the house, always double check you have what you need to be prepared.



Stay connected: Surround yourself with family, friends and the things you love.



Customize your home: Consider modifying your home to be more assessable and easier to navigate.



Consider your mental health: A trained professional can help you and your loved ones cope with any emotions you're feeling.

Tanabe Pharma America, Inc. does not provide medical advice, diagnosis, or treatment. The health information contained herein is provided for general educational purposes only. Your healthcare professional is the best source of information regarding your health. Please consult your healthcare professional if you have any questions about your health or treatment.

Treatment Options

Beyond taking interventions to assist with nutritional intake and breathing, there are different approaches that your healthcare provider(s) may prescribe or recommend to treat your disease.

Your healthcare provider(s) may prescribe medications that:

May help with specific symptoms of your disease.

OR

May help slow the progression of certain aspects of your disease.

Unfortunately, there is no cure for ALS, but you can work with your healthcare provider(s) to find treatments that may help you.

**Speak with your healthcare provider(s)
about both types of treatment options.**

Make Your Next Steps Count



Plan Ahead: Anticipate and address your future everyday needs. This can include prepping your home to make living with ALS easier.



Be Ready to Act: Talk to your doctor about the steps you may need to take to deal with advanced ALS symptoms down the road. This way you'll know what to expect and when to take action.



Find Your Care Team: Seeking multidisciplinary care can help ensure that you have a comprehensive, personalized plan for treating ALS.



Take Advantage of Valuable Resources: There are many helpful organizations that provide education, support services, patient advocacy, and research.

Please talk to your ALS healthcare provider(s) about patient service groups and programs available online and in your area.

Take Notes

As you speak with your healthcare provider(s), use the space below to take note of any additional tips or best practices they recommend. If you have difficulty writing, ask a caregiver or loved one to take notes for you.

For more information on ALS, as well
as tools and resources for caregivers,
visit **ALS**pathways.com

1. Amyotrophic lateral sclerosis (ALS) fact sheet. National Institute of Neurological Disorders and Stroke. https://www.ninds.nih.gov/sites/default/files/migrate-documents/ALS_FactSheet-E_508C.pdf. Published January 2017. Accessed October 14, 2025.
2. What is ALS? ALS Association website. <https://www.als.org/understanding-als/what-is-als>. Accessed October 14, 2025.
3. Cedarbaum JM, Stambler N, Malta E, et al; BDNF ALS Study Group (Phase III). The ALSFRS-R: a revised ALS functional rating scale that incorporates assessments of respiratory function. *J Neurol Sci*. 1999;169(1-2):13-21.
4. Mitchell JD, Borasio GD. Amyotrophic lateral sclerosis. *Lancet*. 2007;369:2031-2041.
5. Amyotrophic lateral sclerosis: symptoms and causes. Mayo Clinic website. www.mayoclinic.org/diseases-conditions/amyotrophic-lateral-sclerosis/symptoms-causes/dxc-20247211. Accessed October 14, 2025.
6. Symptoms and diagnosis. ALS Association website. <https://www.als.org/understanding-als/symptoms-diagnosis>. Accessed October 14, 2025.
7. Beghi E, Mennini T, Bendotti C, et al. The heterogeneity of amyotrophic lateral sclerosis: a possible explanation of treatment failure. *Curr Med Chem*. 2007;14(30):3185-3200.
8. Rutkove SB. Clinical measures of disease progression in amyotrophic lateral sclerosis. *Neurotherapeutics*. 2015;12(2):384-393.
9. Eisen A. Motor neurone disease. In: Turner MR, Kiernan MC, eds. *Landmark Papers in Neurology*. 1st ed. Oxford, United Kingdom: Oxford University Press; 2015:264.
10. Berry JD, Cudkowicz ME. New considerations in the design of clinical trials for amyotrophic lateral sclerosis. *Clin Invest (Lond)*. 2011;1(10):1375-1389.
11. Castrillo-Viguera C, Grasso DL, Simpson E, Shefner J, Cudkowicz ME. Clinical significance in the change of decline in ALSFRS-R. *Amyotroph Lateral Scler*. 2010;11(1-2):178-180.
12. Traynor BJ, Alexander M, Corr B, Frost E, Hardiman O. Effect of a multidisciplinary amyotrophic lateral sclerosis (ALS) clinic on ALS survival: a population based study, 1996-2000. *J Neurol Neurosurg Psychiatry*. 2003;74(9):1258-1261.
13. Van den Berg JP, Kalmijn S, Lindeman E, et al. Multidisciplinary ALS care improves quality of life in patients with ALS. *Neurology*. 2005;65(8):1264-1267.
14. Malnutrition in Amyotrophic Lateral Sclerosis. MDPI website. <https://pmc.ncbi.nlm.nih.gov/articles/PMC11356978/pdf/nutrients-16-02625.pdf>. Published August 2024. Accessed October 14, 2025.
15. Miller RG, Jackson CE, Kasarskis EJ, et al. Practice parameter update: the care of the patient with amyotrophic lateral sclerosis: drug, nutritional, and respiratory therapies (an evidence-based review). *Neurology*. 2009;73(15):1218-1226.
16. Lou J-S, Moore D, Gordon PH, Miller R. Correlates of quality of life in ALS: lessons from the minocycline study. *Amyotroph Lateral Scler*. 2010;11(1-2):116-121.
17. Zatzavekas, Kathy, MBA, RD, LDN. Nutrition Considerations for People with ALS. ALS Clinic University of Pittsburgh website. <https://www.alsclinic.pitt.edu/patient-issues/nutrition-considerations-people-als>. Revised February 24, 2025. Accessed October 14, 2025.
18. Boynton de Sepulveda, Linda, RN, PhD, DFNP, DNSC, FYI: Breathing Difficulties. ALS Association Website. <https://www.als.org/navigating-als/resources/fyi-breathing-difficulties>. Revised 2016. Accessed October 14, 2025.



The corporate symbol of Tanabe Pharma America is a registered trademark of Tanabe Pharma Corporation. ALS Pathways is a registered trademark of Tanabe Pharma America, Inc.

Intended for US Residents Only.

© 2025 Tanabe Pharma America, Inc. All rights reserved. CNP-NON-US-0399 12/25